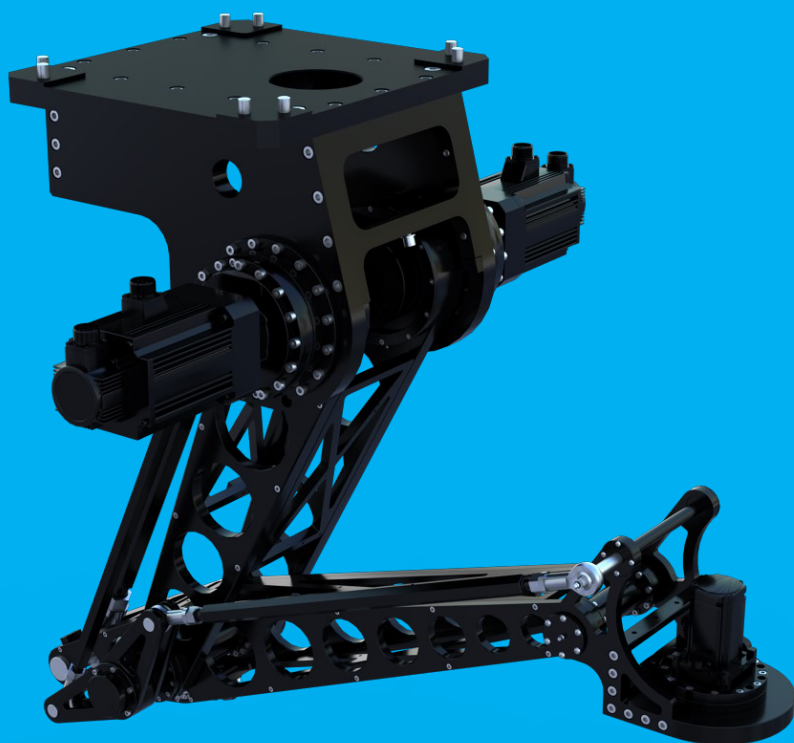


码垛机器人

选型手册

Palletizing Robot Selection Manual

PT30



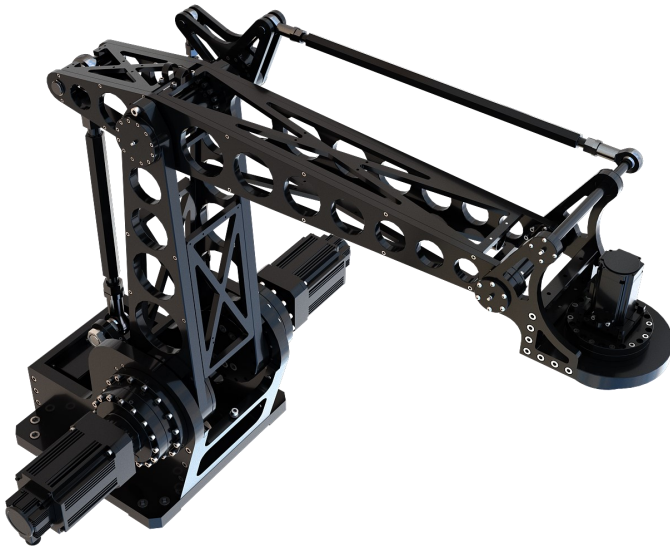
● 型号和符号

负载	安装方式	型号	控制器类型	控制柜类型
30kg	A: 正装	600	A1: ATOMCONTROL	E1: ATOM-01 E2: ATOM-02 E3: 定制
	B: 吊装		A2: KEBA CONTROL	

● Model and Symbol

Load Type	Installation mode	Type	Control Type	Control Cabinet
30kg	A: Ground mounted	600	A1: ATOMCONTROL	E1: ATOM-01 E2: ATOM-02 E3: Custom
	B: Upside-Down		A2: KEBA CONTROL	

PT30-A-600



正装设计 Ground mounted design
轻量化 Lightweight Design
高速度 High Speed
低成本 Low cost

- ◆ **正装设计，更高的空间利用率。**
Down Installation, which can attain higher storage utilization.
- ◆ **臂主体采用碳纤维材质，更轻快。**
Arm is made of carbon fiber, which is lighter and faster.
- ◆ **非常适用于中小负载的大行程装箱码垛工作。**
The robot is ideal for large stroke stacking and stacking work of medium and small loads.

型号 Type		PT30-A-600
轴数 Axes		3
最大负载 Payload		30kg
机器人本体 Manipulator	重量 Weight	120kg
	工作空间 Working space	600x600mm
重复定位精度 Repeatability	位置 Position	±0.1mm
	旋转 Rotation	±0.05°
各轴运动范围 Range of Axis	X-axis	±300mm
	Y-axis	±300mm
	X-Rot	360°
速度节拍 Payload and Speed Feature	测试负载 Test Payload	30kg
	测试路径 Test Path	100-600-600mm
	节拍 Speed	30 cpm
输入电源 Power supply	三相 Three-phase 380VAC -10%~+10%, 49~61HZ	
电源容量 Power capacity	7.5KVA	
额定功率 Rated Power	5kw	
保存温度 Storage temperature	-10°C~70°C	
工作环境 Work environment	0°C~50°C, RH≤80%	
防护等级 Protection	IP55	

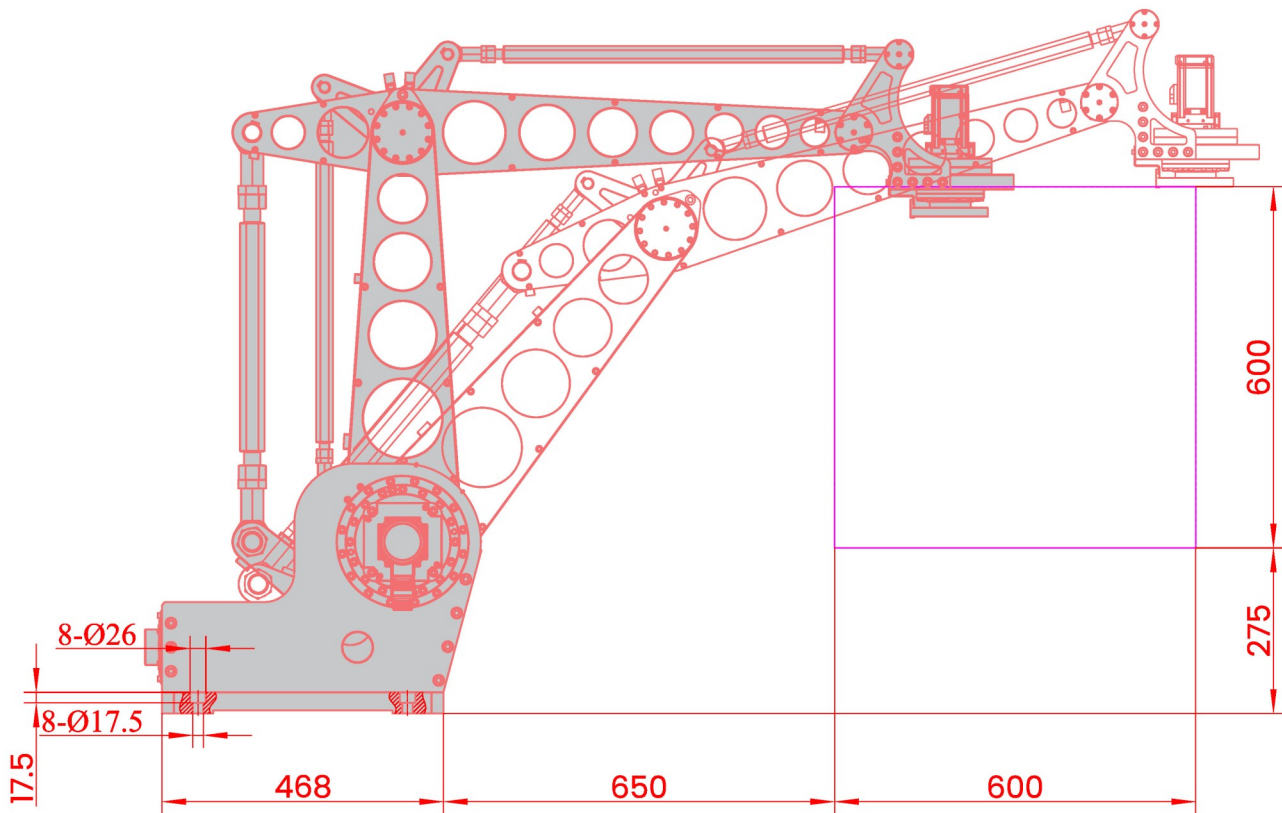
外形尺寸及运动范围
Outline dimensions and Working range (mm)

说明:

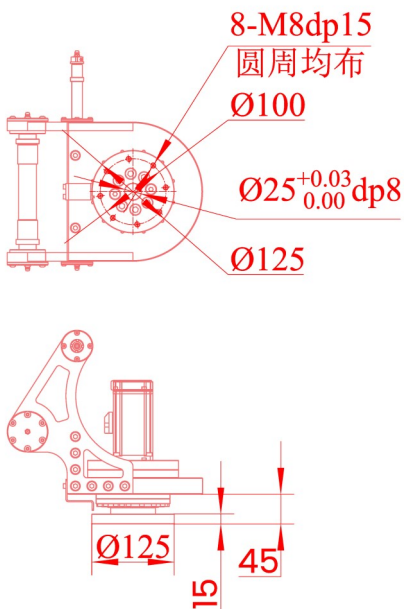
图示下部灰色工作空间代表末端俯仰转轴的中心点所能到达的区域。

Instruction:

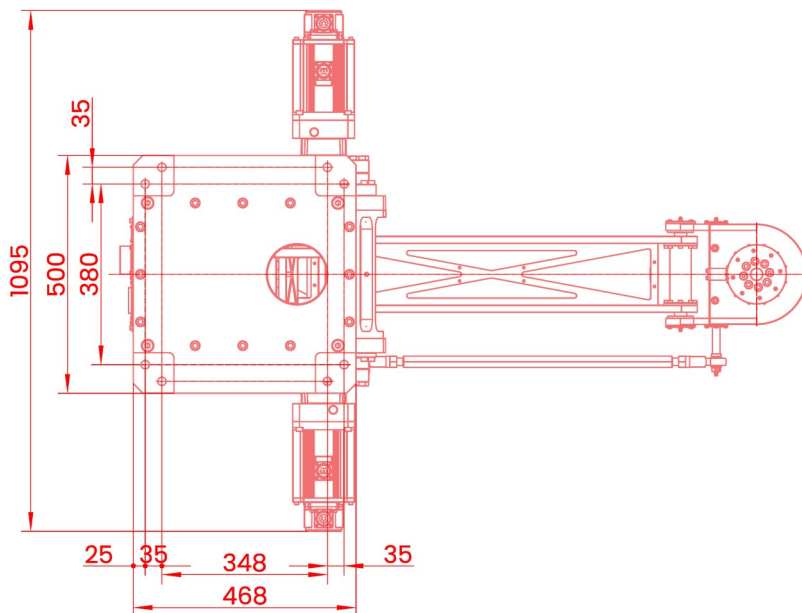
The bottom gray workspace in the figure represents the area that can be reached by the center point of the end pitch axis.



法兰 Flange (mm)



基座安装 Base installation (mm)



PT30-B-600



吊装设计 **Upside-Down Installation**
轻量化 **Lightweight Design**
高速度 **High Speed**
低成本 **Low cost**

◆ **吊装设计，更高的空间利用率。**

Upside-Down Installation, which can attain higher storage utilization .

◆ **臂主体采用碳纤维材质，更轻快。**

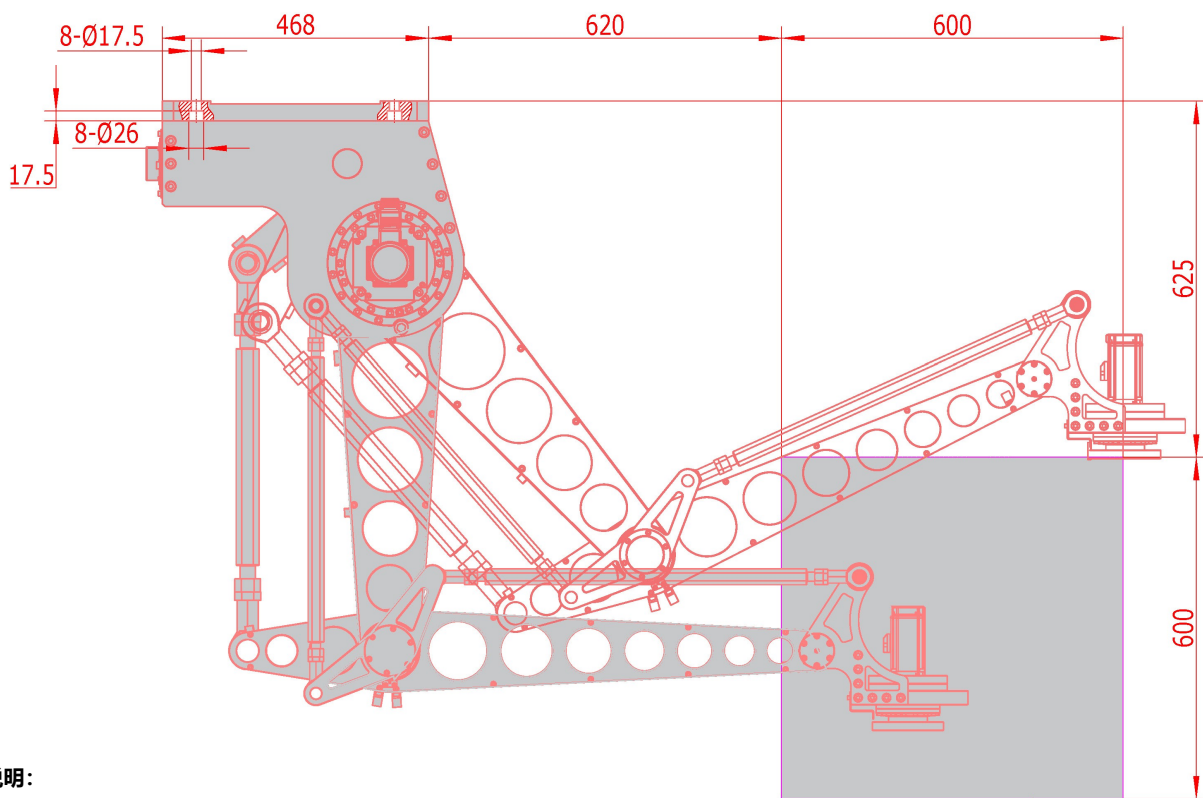
Arm is made of carbon fiber, which is lighter and faster.

◆ **非常适用于中小负载的大行程装箱码垛工作。**

The robot is ideal for large stroke stacking and stacking work of medium and small loads.

型号 Type		PT30-B-600
轴数 Axes		3
最大负载 Payload		30kg
机器人本体 Manipulator	重量 Weight	120kg
	工作空间 Working space	600x600mm
重复定位精度 Repeatability	位置 Position	±0.1mm
	旋转 Rotation	±0.05°
各轴运动范围 Range of Axis	X-axis	±300mm
	Y-axis	±300mm
	X-Rot	360°
速度节拍 Payload and Speed Feature	测试负载 Test Payload	30kg
	测试路径 Test Path	100-600-600mm
	节拍 Speed	30 cpm
输入电源 Power supply	三相 Three-phase 380VAC -10%~+10%, 49~61HZ	
电源容量 Power capacity	7.5KVA	
额定功率 Rated Power	5kw	
保存温度 Storage temperature	-10°C~70°C	
工作环境 Work environment	0°C~50°C, RH≤80%	
防护等级 Protection	IP55	

外形尺寸及运动范围
Outline dimensions and Working range (mm)



说明:

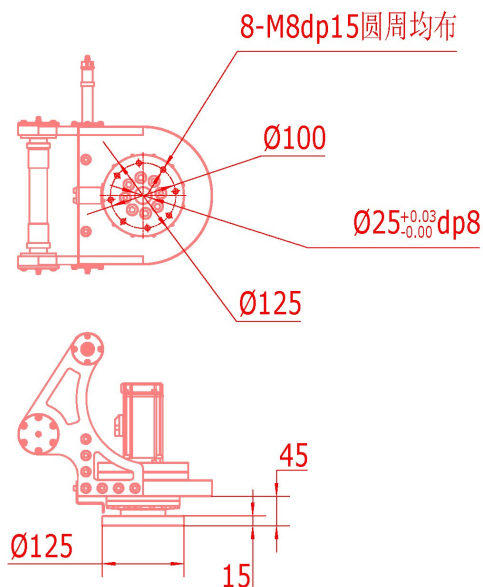
图示下部灰色工作空间代表末端俯仰转轴的中心点所能到达的区域。

Instruction:

The bottom gray workspace in the figure represents the area that can be reached by the center point of the end pitch axis.

工作空间示意

法兰 Flange (mm)



基座安装 Base installation (mm)

